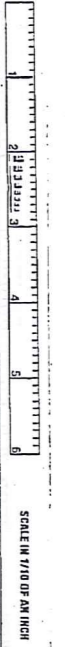


SCALE 1"=300'

TRW-REDI  
1-800-345-7334



\* Inadequate description

JANUARY 1, 1996

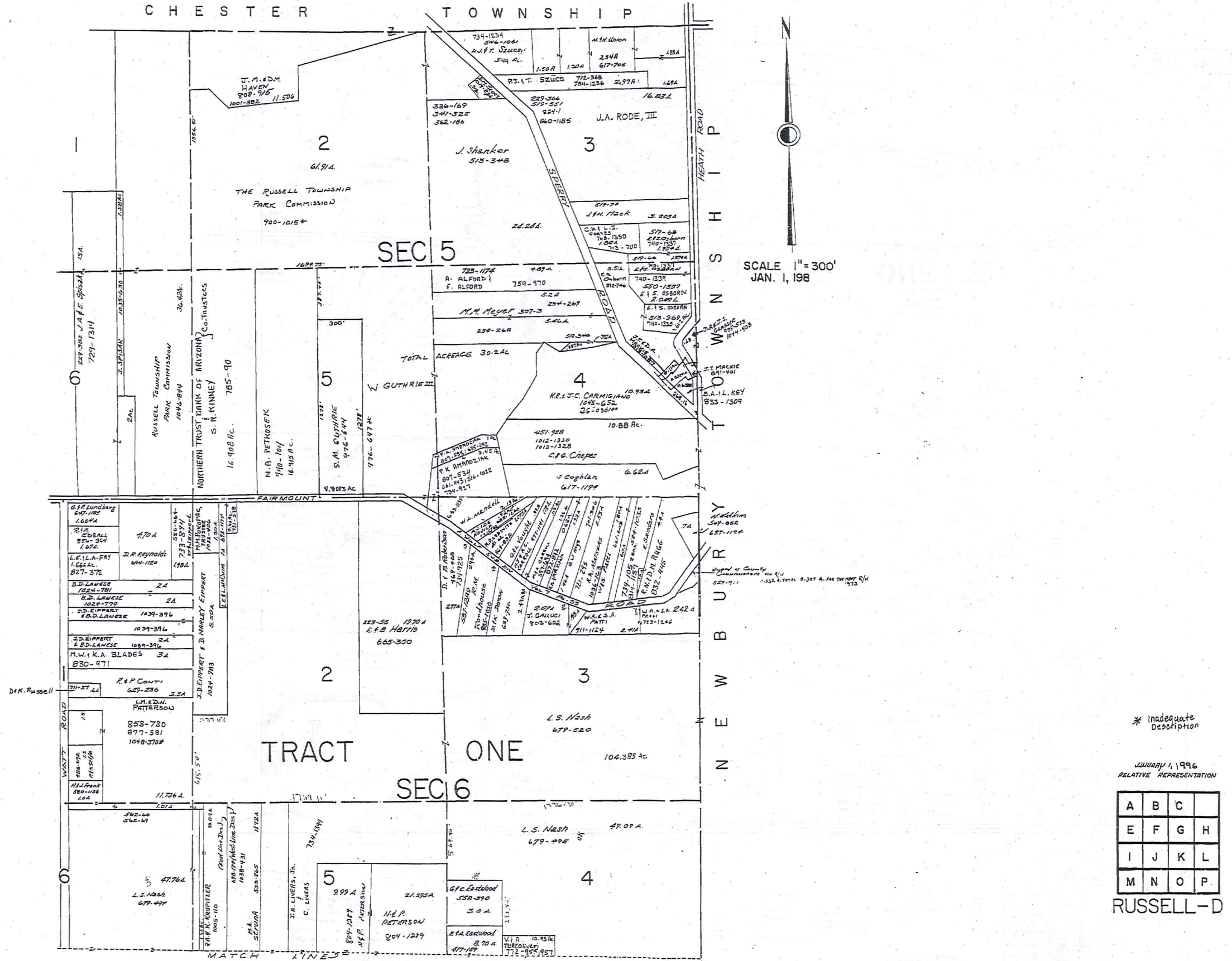
A	B	C	D
E	F	G	H
I	J	K	L
M	N	O	P

RUSSELL - B

\* PLATIVE REPRESENTATION



CHESTER TOWNSHIP



SCALE 1" = 300'  
JAN. 1, 198

TRIM-RED  
1-800-345-7334



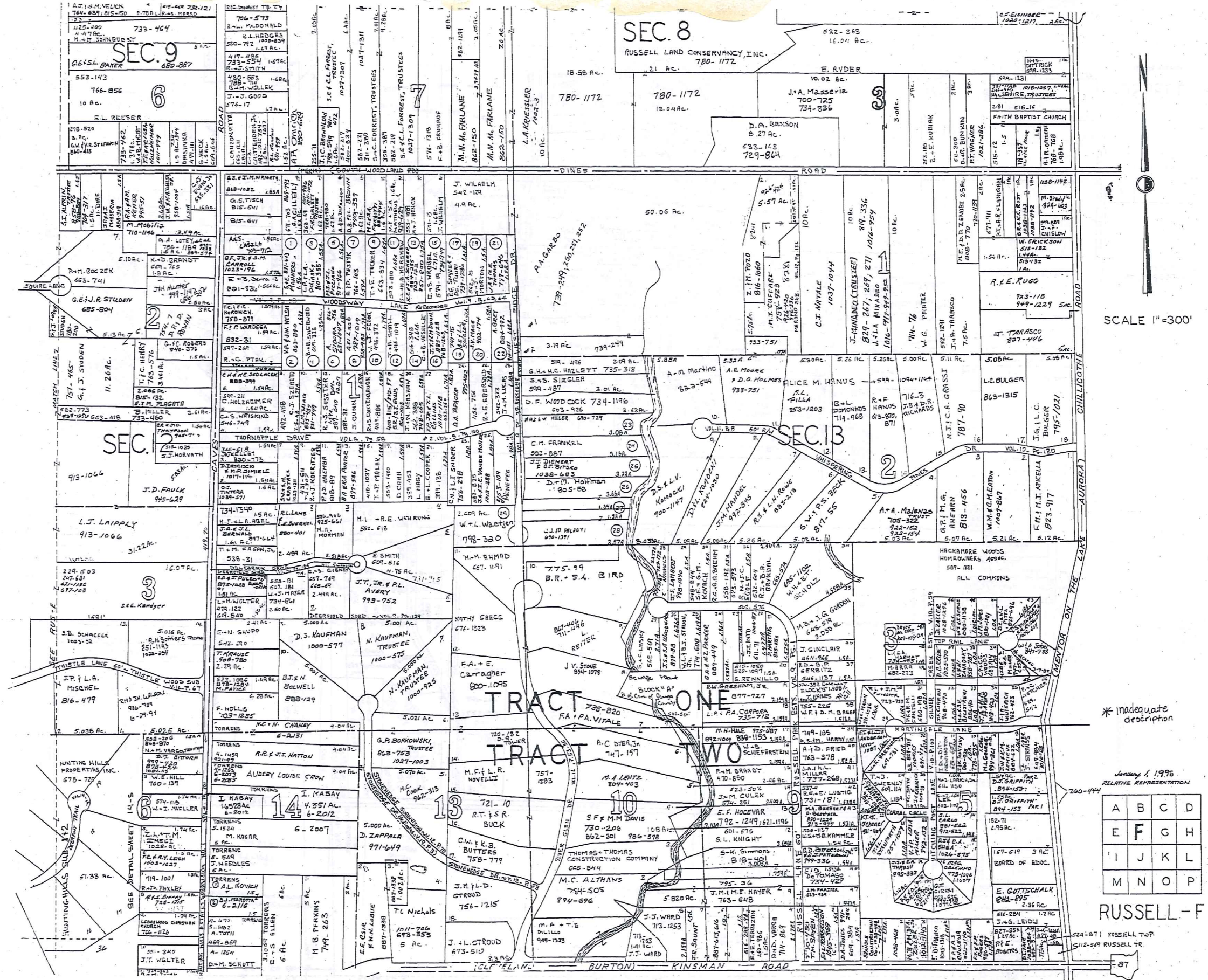
\* Inadequate Description

JANUARY 1, 1996  
RELATIVE REPRESENTATION

A	B	C	
E	F	G	H
I	J	K	L
M	N	O	P

RUSSELL-D





TAN-RECU  
1-800-345-7334  
SCALE 1"=300'  
SCALE IN FEET AND INCHES

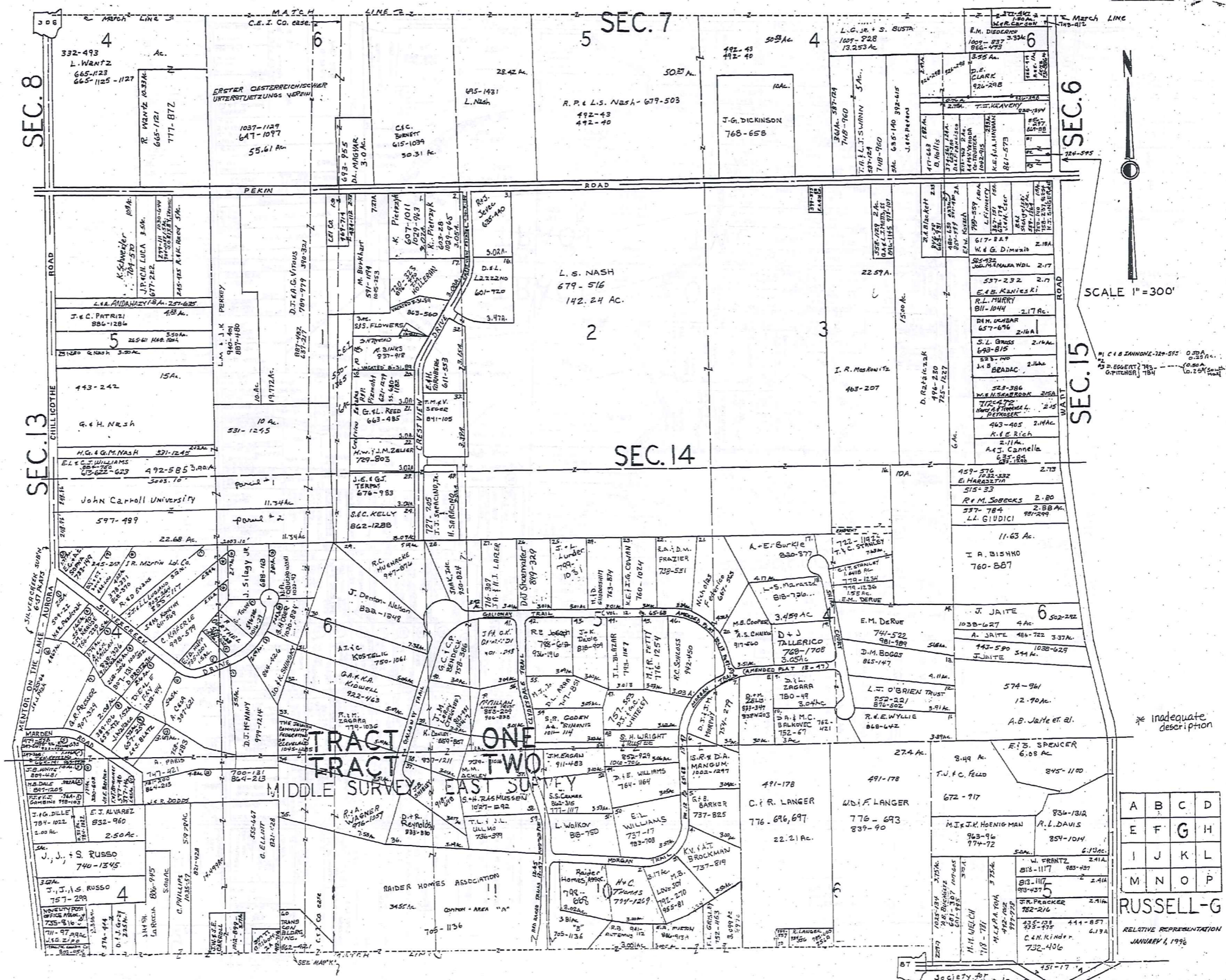
\* Inadequate description

January 1, 1996  
RELATIVE REPRESENTATION

A	B	C	D
E	F	G	H
I	J	K	L
M	N	O	P

RUSSELL-F

524-871 RUSSELL TWP.  
512-549 RUSSELL TR.



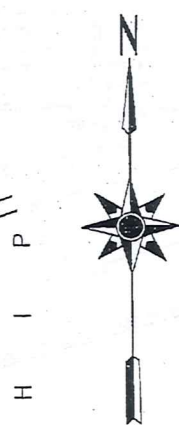
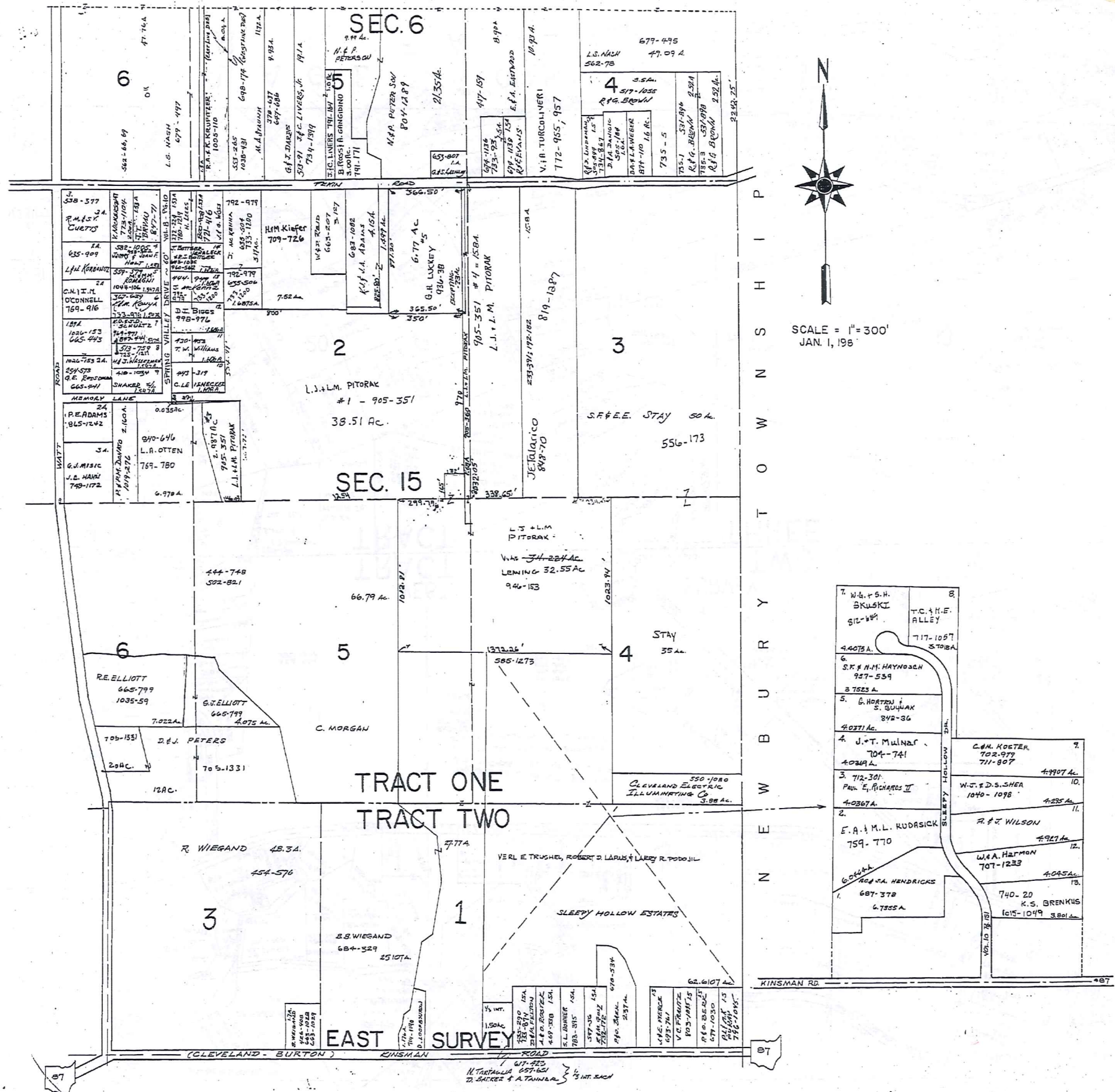
TRIM-REDI  
 1-800-345-7334  
 SCALE IN 1/4 OF AN INCH

A	B	C	D
E	F	G	H
I	J	K	L
M	N	O	P

**RUSSELL-G**  
 RELATIVE REPRESENTATION  
 JANUARY 6, 1996

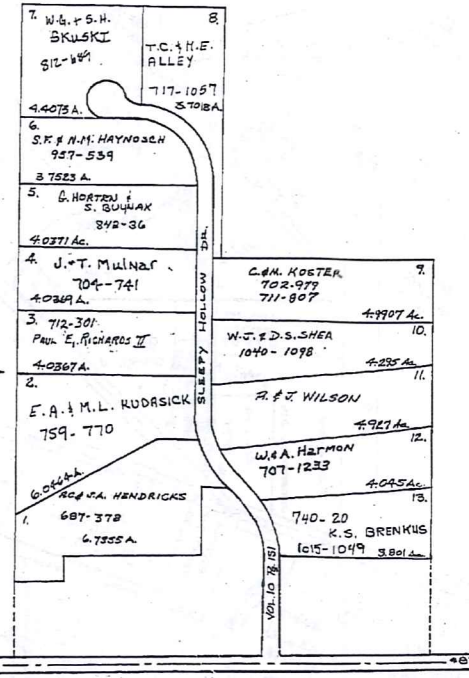
\* Inadequate description

Society of Professional Surveyors



SCALE = 1" = 300'  
JAN. 1, 1986

P  
I  
S  
N  
W  
O  
T  
B  
U  
R  
Y  
E  
N



\* inadequate description

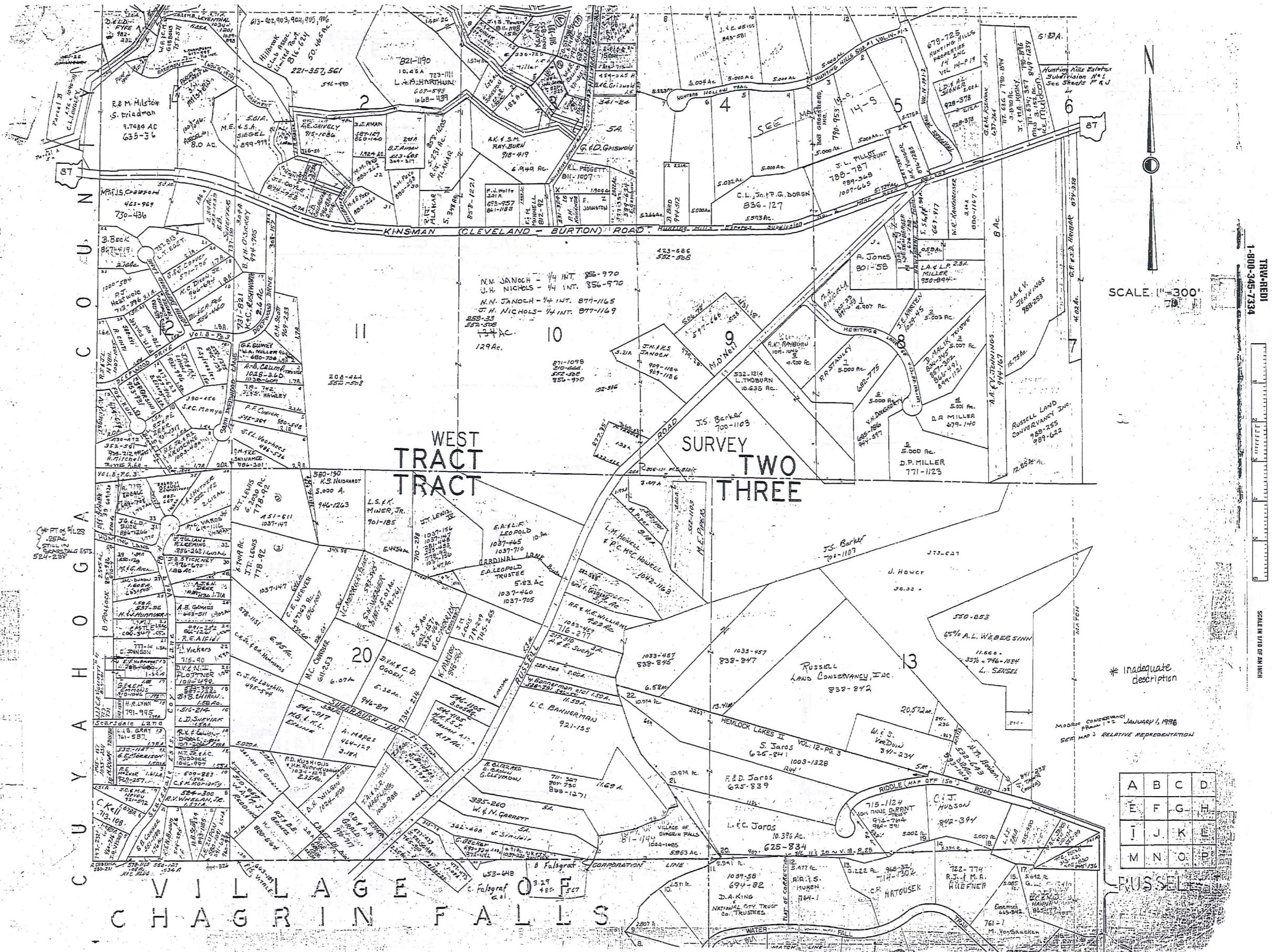
JANUARY 1, 1986  
RELATIVE REPRESENTATION

A	B	C	D
E	F	G	H
I	J	K	L
M	N	O	P

RUSSELL-H

TRACED  
1-800-345-7334

SCALE IN 1/10 OF AN INCH





SCALE 1" = 300'

TRW-REDI  
1-800-349-7334

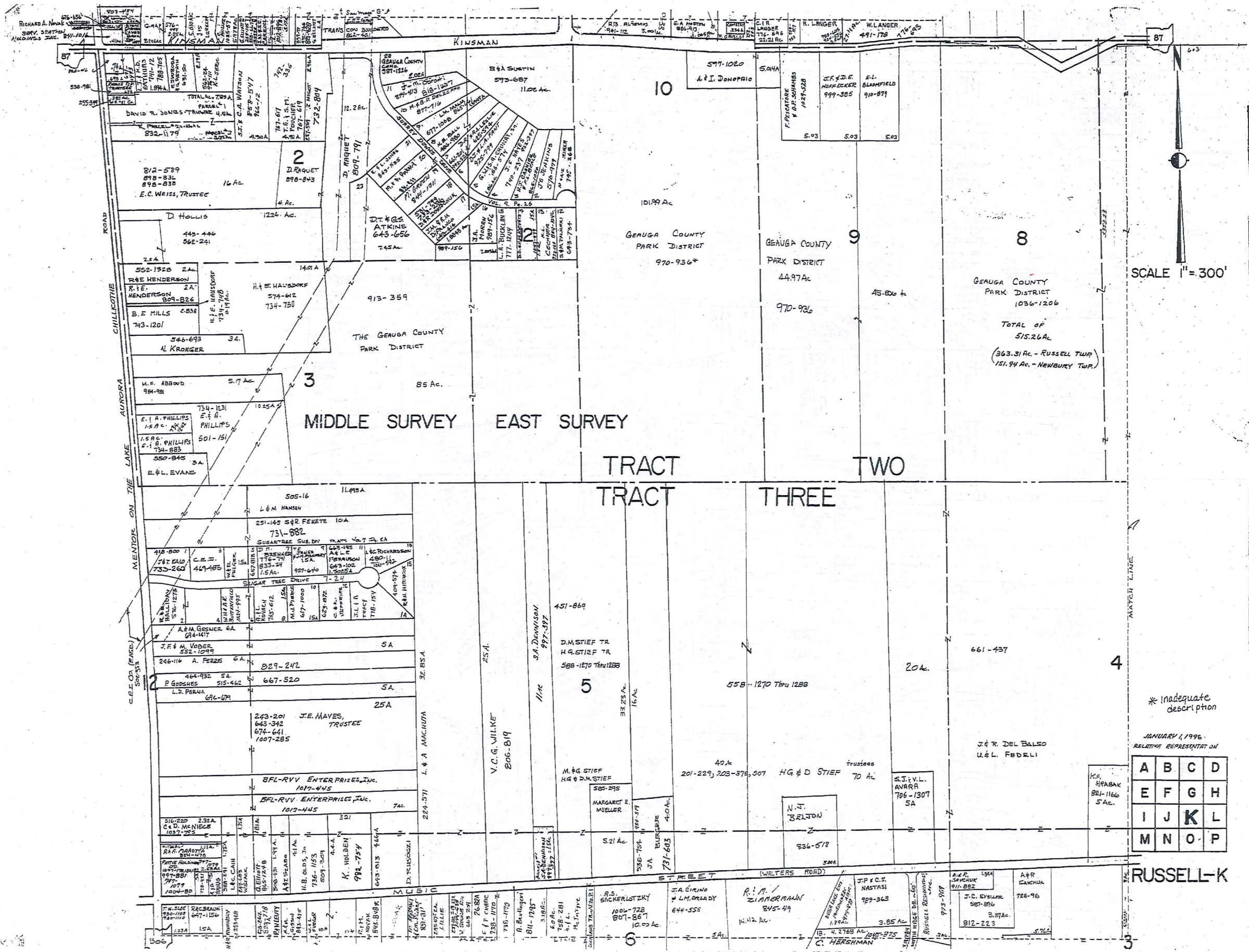
SCALE IN 1/16 OF AN INCH

\* Inadequate description

JANUARY 6, 1996  
RELATIVE REPRESENTATION

A	B	C	D
E	F	G	H
I	J	K	L
M	N	O	P

RUSSELL-J



A	B	C	D
E	F	G	H
I	J	K	L
M	N	O	P

K.F. HRABAK  
821-1166  
5 Ac.

E.T. V.L. AVARA  
706-1307  
5A

H.G. & D. STIEF  
70 Ac.

N. L. BERLTON

MARGARET E. MUELLER

M. & G. STIEF  
H.G. & D. STIEF

V.C.G. WILKE  
206-819

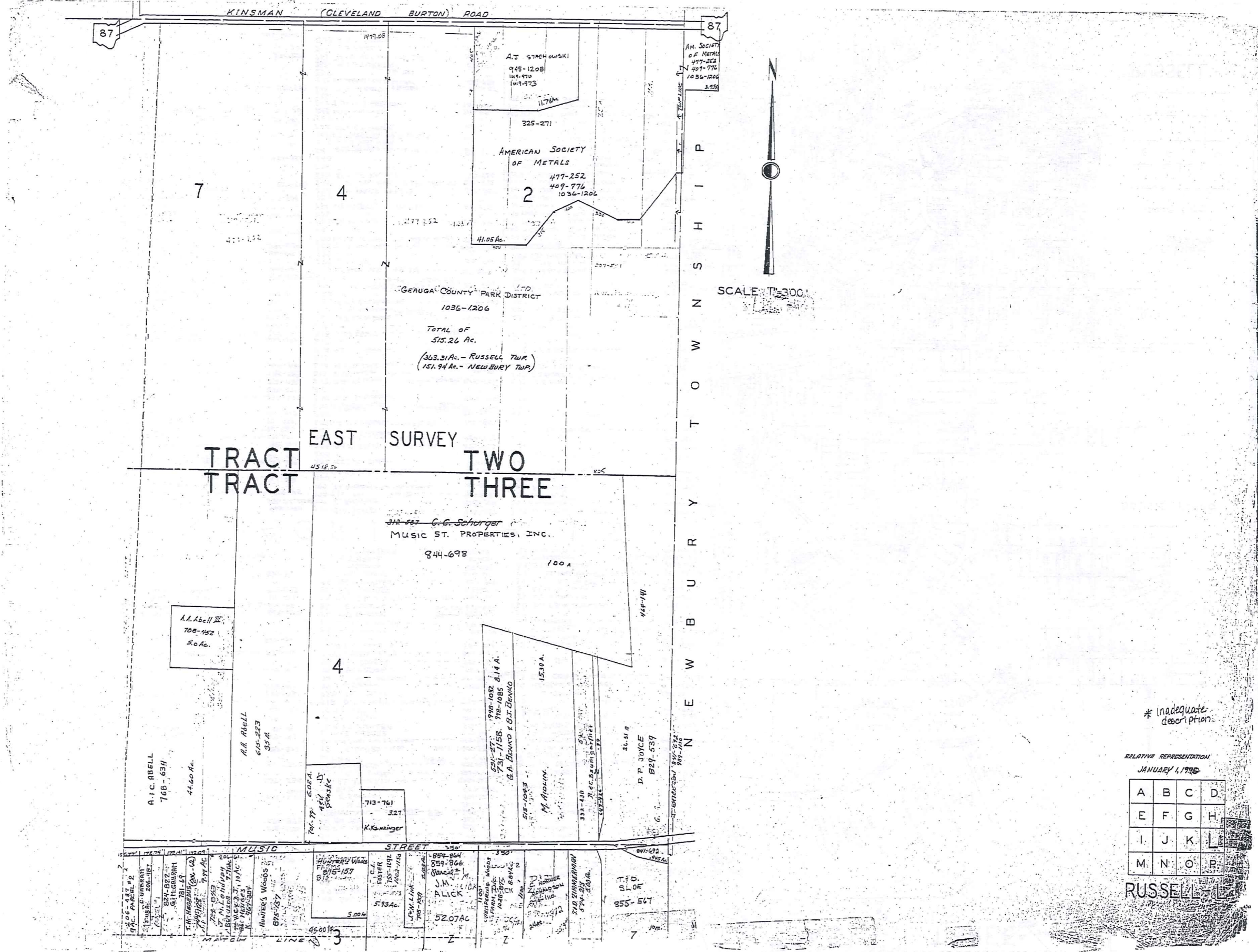
J.E. MAYES, TRUSTEE  
643-342  
674-641  
1007-285

BFL-RVV ENTERPRISES, INC.  
1017-445

C.D. MCNICOLL  
1037-725

PATTIE HOLDEN  
997-881

RICHARD A. NIVAK  
SERV. STATION  
KOROMCS INC.  
841-1014



T.M.W.-REDI  
1-800-345-7334



\* Inadequate description

RELATIVE REPRESENTATION  
JANUARY 1, 1975

A	B	C	D
E	F	G	H
I	J	K	L
M	N	O	P

RUSSELL

CHAGRIN HEIGHTS, SUBDIVISION

VOL. 3 - PG. 5-6 & 17-18 PLATS

Table listing property owners and addresses for Chagrin Heights, Subdivision. Includes names like GERUGA COUNTY, M. H. FREDI, E. VAN KRICH, etc.

Table listing property owners and addresses for Chagrin Heights, Subdivision. Includes names like S. L. WILBERG, R. G. BAUMILL, etc.

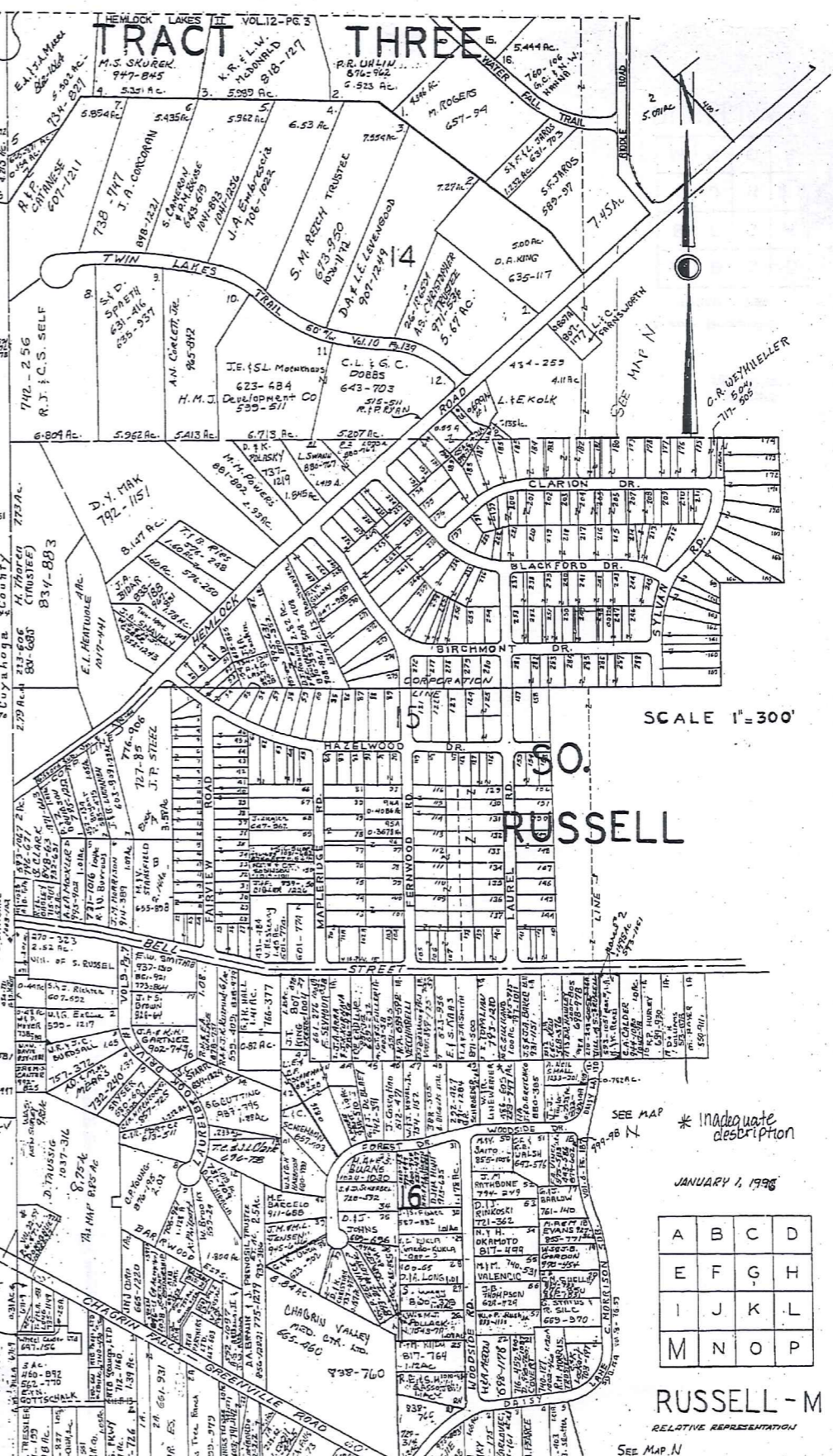
Table listing property owners and addresses for Chagrin Heights, Subdivision. Includes names like R. E. AIVANLENTE, J. A. CONNOR, etc.

CHAGRIN FALLS

Table listing property owners and addresses for Chagrin Falls. Includes names like J. H. FOSTER, S. SCHMIDT, etc.

Table listing property owners and addresses for Chagrin Falls. Includes names like M. B. GRATZL, I. SHAPIRO, etc.

Table listing property owners and addresses for Chagrin Falls. Includes names like J. E. JOHNSON, E. M. SHARKEY, etc.



1-800-345-7334

SCALE 1/10 OF AN INCH

SCALE 1"=300'

JANUARY 1, 1998

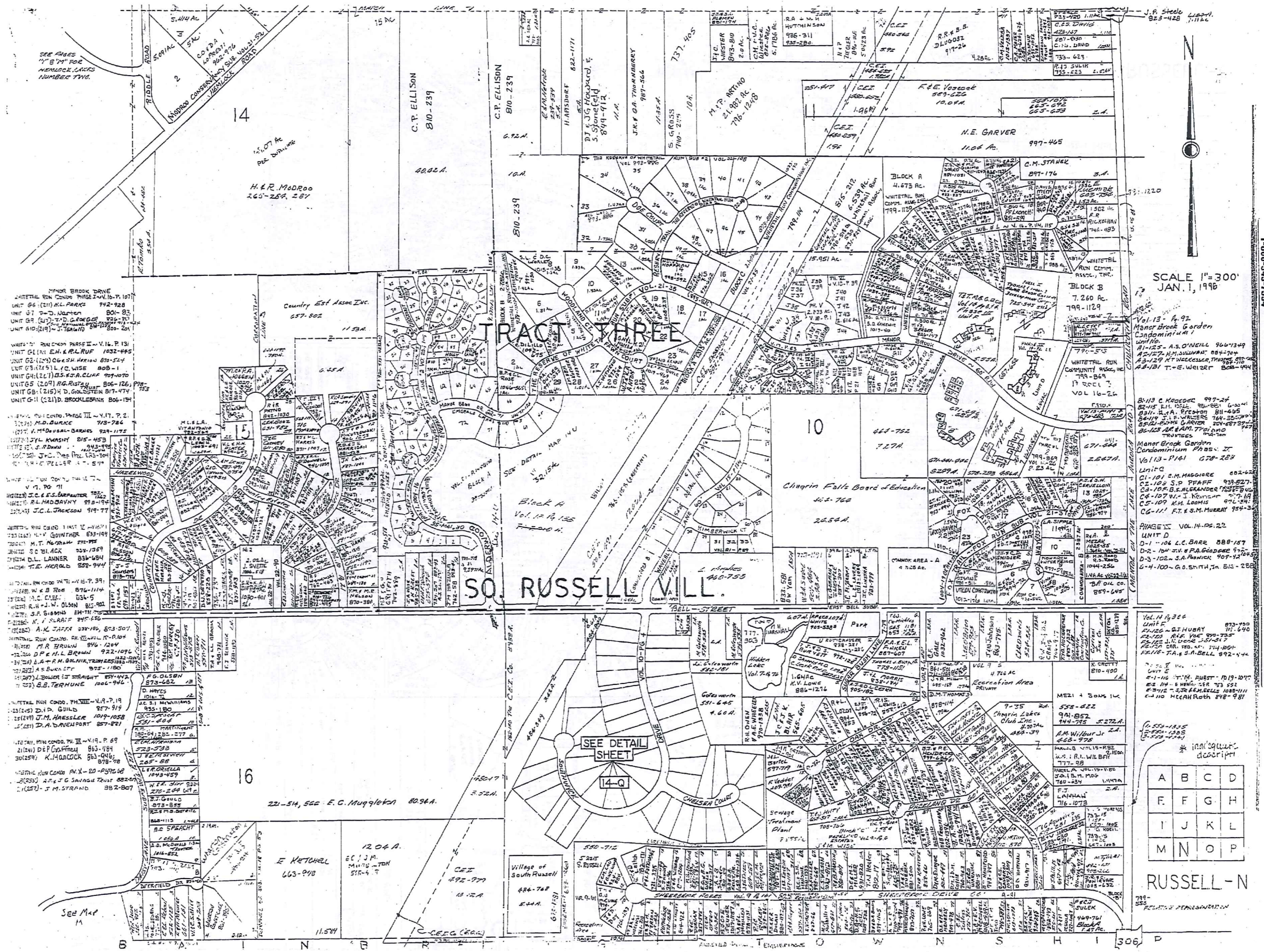
Grid reference table with columns A-D and rows E-L, M-O.

RUSSELL - M

RELATIVE REPRESENTATION

\* Inadequate description

SEE MAP N



MINOR BROOK DRIVE  
 UNIT 66 (11) K.L. PARRIS 912-928  
 UNIT 67 T.D. WATSON 801-83  
 UNIT 68 (17) T.D. WATSON 801-83  
 UNIT 69 (19) T.D. WATSON 801-83  
 UNIT 70 (21) T.D. WATSON 801-83

WHITE RUN CONDO PHASE II - V.L.P. 13  
 UNIT G1 (1) E.H. & R.L. RUF 1032-445  
 UNIT G2 (2) C.ESH. HERRON 870-514  
 UNIT G3 (15) L.C. WISE 808-1  
 UNIT G4 (21) B.S. & J.A. CLARK 707-707  
 UNIT G5 (20) B.S. & J.A. CLARK 707-707  
 UNIT G6 (21) D. GILBERTSON 817-774  
 UNIT G11 (21) D. BROCKLEBANK 806-154

WHITE RUN CONDO PHASE III - V.L.P. 2  
 UNIT 71 M.D. BURKE 743-784  
 UNIT 72 M.D. BURKE 743-784  
 UNIT 73 M.D. BURKE 743-784  
 UNIT 74 M.D. BURKE 743-784  
 UNIT 75 M.D. BURKE 743-784  
 UNIT 76 M.D. BURKE 743-784  
 UNIT 77 M.D. BURKE 743-784  
 UNIT 78 M.D. BURKE 743-784  
 UNIT 79 M.D. BURKE 743-784  
 UNIT 80 M.D. BURKE 743-784  
 UNIT 81 M.D. BURKE 743-784  
 UNIT 82 M.D. BURKE 743-784  
 UNIT 83 M.D. BURKE 743-784  
 UNIT 84 M.D. BURKE 743-784  
 UNIT 85 M.D. BURKE 743-784  
 UNIT 86 M.D. BURKE 743-784  
 UNIT 87 M.D. BURKE 743-784  
 UNIT 88 M.D. BURKE 743-784  
 UNIT 89 M.D. BURKE 743-784  
 UNIT 90 M.D. BURKE 743-784  
 UNIT 91 M.D. BURKE 743-784  
 UNIT 92 M.D. BURKE 743-784  
 UNIT 93 M.D. BURKE 743-784  
 UNIT 94 M.D. BURKE 743-784  
 UNIT 95 M.D. BURKE 743-784  
 UNIT 96 M.D. BURKE 743-784  
 UNIT 97 M.D. BURKE 743-784  
 UNIT 98 M.D. BURKE 743-784  
 UNIT 99 M.D. BURKE 743-784  
 UNIT 100 M.D. BURKE 743-784

WHITE RUN CONDO PHASE IV - V.L.P. 3  
 UNIT 101 J.C. JACKSON 919-77  
 UNIT 102 J.C. JACKSON 919-77  
 UNIT 103 J.C. JACKSON 919-77  
 UNIT 104 J.C. JACKSON 919-77  
 UNIT 105 J.C. JACKSON 919-77  
 UNIT 106 J.C. JACKSON 919-77  
 UNIT 107 J.C. JACKSON 919-77  
 UNIT 108 J.C. JACKSON 919-77  
 UNIT 109 J.C. JACKSON 919-77  
 UNIT 110 J.C. JACKSON 919-77  
 UNIT 111 J.C. JACKSON 919-77  
 UNIT 112 J.C. JACKSON 919-77  
 UNIT 113 J.C. JACKSON 919-77  
 UNIT 114 J.C. JACKSON 919-77  
 UNIT 115 J.C. JACKSON 919-77  
 UNIT 116 J.C. JACKSON 919-77  
 UNIT 117 J.C. JACKSON 919-77  
 UNIT 118 J.C. JACKSON 919-77  
 UNIT 119 J.C. JACKSON 919-77  
 UNIT 120 J.C. JACKSON 919-77

WHITE RUN CONDO PHASE V - V.L.P. 4  
 UNIT 121 J.C. JACKSON 919-77  
 UNIT 122 J.C. JACKSON 919-77  
 UNIT 123 J.C. JACKSON 919-77  
 UNIT 124 J.C. JACKSON 919-77  
 UNIT 125 J.C. JACKSON 919-77  
 UNIT 126 J.C. JACKSON 919-77  
 UNIT 127 J.C. JACKSON 919-77  
 UNIT 128 J.C. JACKSON 919-77  
 UNIT 129 J.C. JACKSON 919-77  
 UNIT 130 J.C. JACKSON 919-77  
 UNIT 131 J.C. JACKSON 919-77  
 UNIT 132 J.C. JACKSON 919-77  
 UNIT 133 J.C. JACKSON 919-77  
 UNIT 134 J.C. JACKSON 919-77  
 UNIT 135 J.C. JACKSON 919-77  
 UNIT 136 J.C. JACKSON 919-77  
 UNIT 137 J.C. JACKSON 919-77  
 UNIT 138 J.C. JACKSON 919-77  
 UNIT 139 J.C. JACKSON 919-77  
 UNIT 140 J.C. JACKSON 919-77

WHITE RUN CONDO PHASE VI - V.L.P. 5  
 UNIT 141 J.C. JACKSON 919-77  
 UNIT 142 J.C. JACKSON 919-77  
 UNIT 143 J.C. JACKSON 919-77  
 UNIT 144 J.C. JACKSON 919-77  
 UNIT 145 J.C. JACKSON 919-77  
 UNIT 146 J.C. JACKSON 919-77  
 UNIT 147 J.C. JACKSON 919-77  
 UNIT 148 J.C. JACKSON 919-77  
 UNIT 149 J.C. JACKSON 919-77  
 UNIT 150 J.C. JACKSON 919-77  
 UNIT 151 J.C. JACKSON 919-77  
 UNIT 152 J.C. JACKSON 919-77  
 UNIT 153 J.C. JACKSON 919-77  
 UNIT 154 J.C. JACKSON 919-77  
 UNIT 155 J.C. JACKSON 919-77  
 UNIT 156 J.C. JACKSON 919-77  
 UNIT 157 J.C. JACKSON 919-77  
 UNIT 158 J.C. JACKSON 919-77  
 UNIT 159 J.C. JACKSON 919-77  
 UNIT 160 J.C. JACKSON 919-77

SCALE 1"=300'  
 JAN. 1, 1998

TRIM-REDI  
 1-800-346-7334

Vol. 13 - P. 92  
 Manor Brook Garden  
 Condominium I  
 UNIT 10  
 A-102 A.S. O'NEILL 966-749  
 A-103 H.M. WILSON 804-704  
 A-104 K.W. WILSON 804-704  
 A-105 T.E. WEISER 808-494

Vol. 13 - P. 91  
 Manor Brook Garden  
 Condominium Phase II  
 Vol. 13 - P. 91  
 G79-289  
 UNIT C  
 C1-101 C.M. MAGGIORE 802-422  
 C2-102 S.P. PFAFF 939-827  
 C3-103 B.S. ALEXANDER 752-546  
 C4-104 J.L. KORTER 977-65  
 C5-105 K.H. LEAHY 976-594  
 C6-106 F.T.S.M. MURRAY 954-3

PHASE II VOL. 14 - P. 22  
 UNIT D  
 D-1 J.C. BARR 888-157  
 D-2 J.C. BARR 888-157  
 D-3 J.C. BARR 888-157  
 D-4 J.C. BARR 888-157

Vol. 14 - P. 24  
 UNIT E  
 E-1 J.C. BARR 888-157  
 E-2 J.C. BARR 888-157  
 E-3 J.C. BARR 888-157  
 E-4 J.C. BARR 888-157

Vol. 14 - P. 25  
 UNIT F  
 F-1 J.C. BARR 888-157  
 F-2 J.C. BARR 888-157  
 F-3 J.C. BARR 888-157  
 F-4 J.C. BARR 888-157

Vol. 14 - P. 26  
 UNIT G  
 G-1 J.C. BARR 888-157  
 G-2 J.C. BARR 888-157  
 G-3 J.C. BARR 888-157  
 G-4 J.C. BARR 888-157

Vol. 14 - P. 27  
 UNIT H  
 H-1 J.C. BARR 888-157  
 H-2 J.C. BARR 888-157  
 H-3 J.C. BARR 888-157  
 H-4 J.C. BARR 888-157

Vol. 14 - P. 28  
 UNIT I  
 I-1 J.C. BARR 888-157  
 I-2 J.C. BARR 888-157  
 I-3 J.C. BARR 888-157  
 I-4 J.C. BARR 888-157

Vol. 14 - P. 29  
 UNIT J  
 J-1 J.C. BARR 888-157  
 J-2 J.C. BARR 888-157  
 J-3 J.C. BARR 888-157  
 J-4 J.C. BARR 888-157

Vol. 14 - P. 30  
 UNIT K  
 K-1 J.C. BARR 888-157  
 K-2 J.C. BARR 888-157  
 K-3 J.C. BARR 888-157  
 K-4 J.C. BARR 888-157

Vol. 14 - P. 31  
 UNIT L  
 L-1 J.C. BARR 888-157  
 L-2 J.C. BARR 888-157  
 L-3 J.C. BARR 888-157  
 L-4 J.C. BARR 888-157

Vol. 14 - P. 32  
 UNIT M  
 M-1 J.C. BARR 888-157  
 M-2 J.C. BARR 888-157  
 M-3 J.C. BARR 888-157  
 M-4 J.C. BARR 888-157

Vol. 14 - P. 33  
 UNIT N  
 N-1 J.C. BARR 888-157  
 N-2 J.C. BARR 888-157  
 N-3 J.C. BARR 888-157  
 N-4 J.C. BARR 888-157

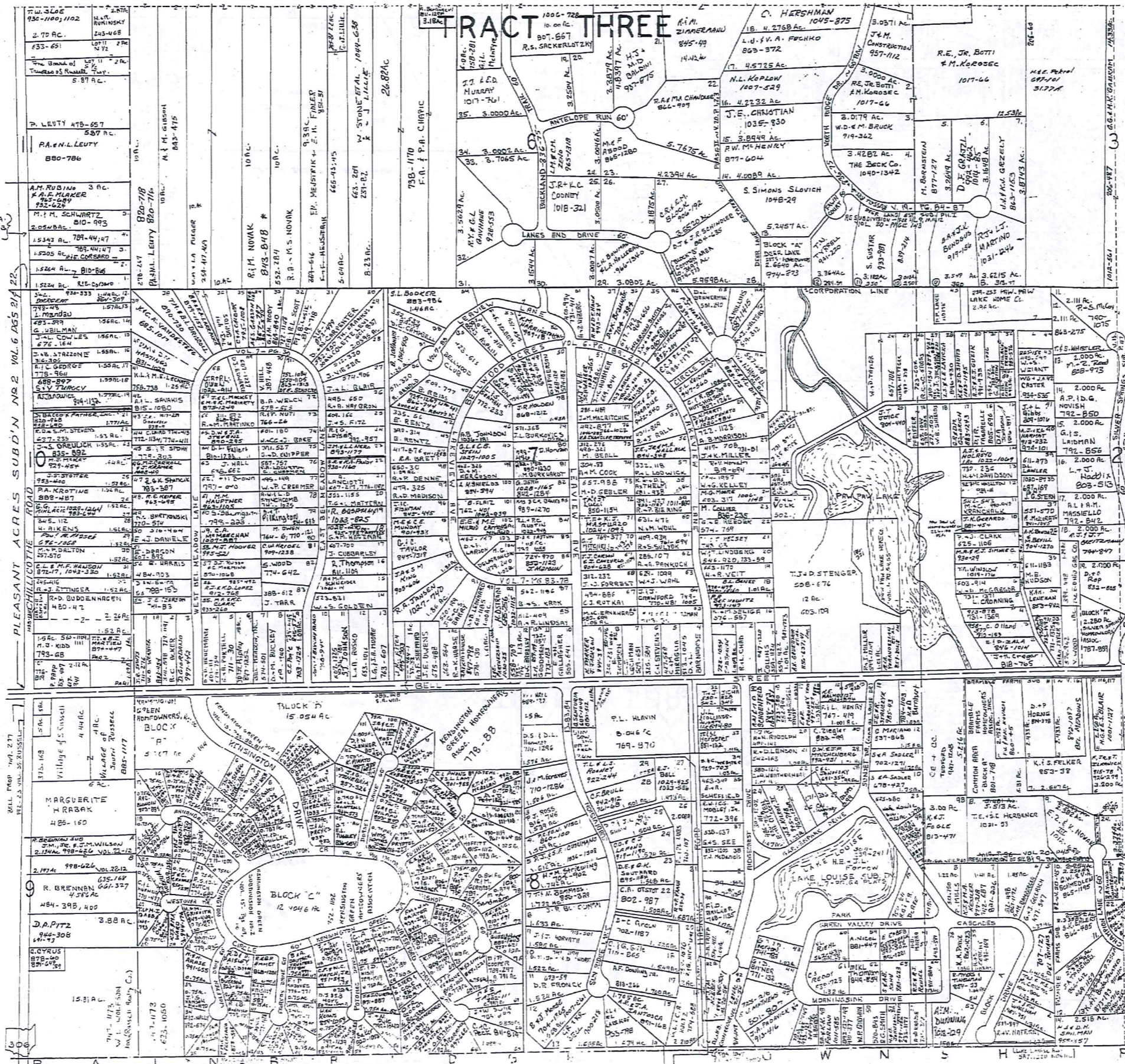
Vol. 14 - P. 34  
 UNIT O  
 O-1 J.C. BARR 888-157  
 O-2 J.C. BARR 888-157  
 O-3 J.C. BARR 888-157  
 O-4 J.C. BARR 888-157

Vol. 14 - P. 35  
 UNIT P  
 P-1 J.C. BARR 888-157  
 P-2 J.C. BARR 888-157  
 P-3 J.C. BARR 888-157  
 P-4 J.C. BARR 888-157

A	B	C	D
E	F	G	H
I	J	K	L
M	N	O	P

RUSSELL - N

SCALE IN 1/16" = 1' ON PLAN



M.E.-J.L. FARROW  
"LAKE LOUISE"  
VOL. 304 Pgs. 239-241  
Subv. Vol. 7 pg. 64

1	589	897	REV. MATCARI
2	754	751	G.M. YAEGER
3	722	472	R.C. GENBERG
4	707	127	D.L. ROMAN
5	477	647	G.C. GOODRICH
6	257	722	G.A. BARNBERGER
7	257	722	K.M. BARNBERGER 97-210
8	257	722	R.M. MILLS
9	257	722	H. RAYNER 887-1519
10	257	722	S.A. SADDLER 671-949
11	702	1271	S.A. SADDLER
12	537	868	G. MARLAND 888-941
13	784	1103	N.E. BARNHART
14	813	471	K.E.J. FOOLE

SCALE 1"=300'  
JAN. 1, 1946

11	985	27	S.E. STANCZYK
12	578	926	A.K. MALMOQUIST
13	"	"	"
14	1131	1137	F. R. MORGNEY TRUSTEES, 997-389
15	553	526	HEM RIEGEL
16	804	783	W.M. H. SCHENFELD
17	480	172	REAR RUDOLPH
18	258	163	W.C. LEWIS
19	258	163	W.C. WEATHERHEAD
20	258	163	LAKE LOUISE SUB
21	258	163	F.A. OTTEN
22	258	163	S.K. HOLMES
23	258	163	W.M. J. JANSKY
24	258	163	"
25	258	163	"
26	258	163	"
27	258	163	"
28	258	163	"
29	258	163	"
30	258	163	"
31	258	163	"
32	258	163	"
33	258	163	"
34	258	163	"
35	258	163	"
36	258	163	"
37	258	163	"
38	258	163	"
39	258	163	"
40	258	163	"
41	258	163	"
42	258	163	"
43	258	163	"
44	258	163	"
45	258	163	"
46	258	163	"
47	258	163	"
48	258	163	"
49	258	163	"
50	258	163	"
51	258	163	"
52	258	163	"
53	258	163	"
54	258	163	"
55	258	163	"
56	258	163	"
57	258	163	"
58	258	163	"
59	258	163	"
60	258	163	"
61	258	163	"
62	258	163	"
63	258	163	"
64	258	163	"
65	258	163	"
66	258	163	"
67	258	163	"
68	258	163	"
69	258	163	"
70	258	163	"
71	258	163	"
72	258	163	"
73	258	163	"
74	258	163	"
75	258	163	"
76	258	163	"
77	258	163	"
78	258	163	"
79	258	163	"
80	258	163	"
81	258	163	"
82	258	163	"
83	258	163	"
84	258	163	"
85	258	163	"
86	258	163	"
87	258	163	"
88	258	163	"
89	258	163	"
90	258	163	"
91	258	163	"
92	258	163	"
93	258	163	"
94	258	163	"
95	258	163	"
96	258	163	"
97	258	163	"
98	258	163	"
99	258	163	"
100	258	163	"

A	B	C	D
E	F	G	H
I	J	K	L
M	N	O	P

RUSSELL-0  
RELATIVE REPRESENTATION

1-800-345-7334  
TRAFFIC  
SCALE 1"=300'  
JAN. 1, 1946

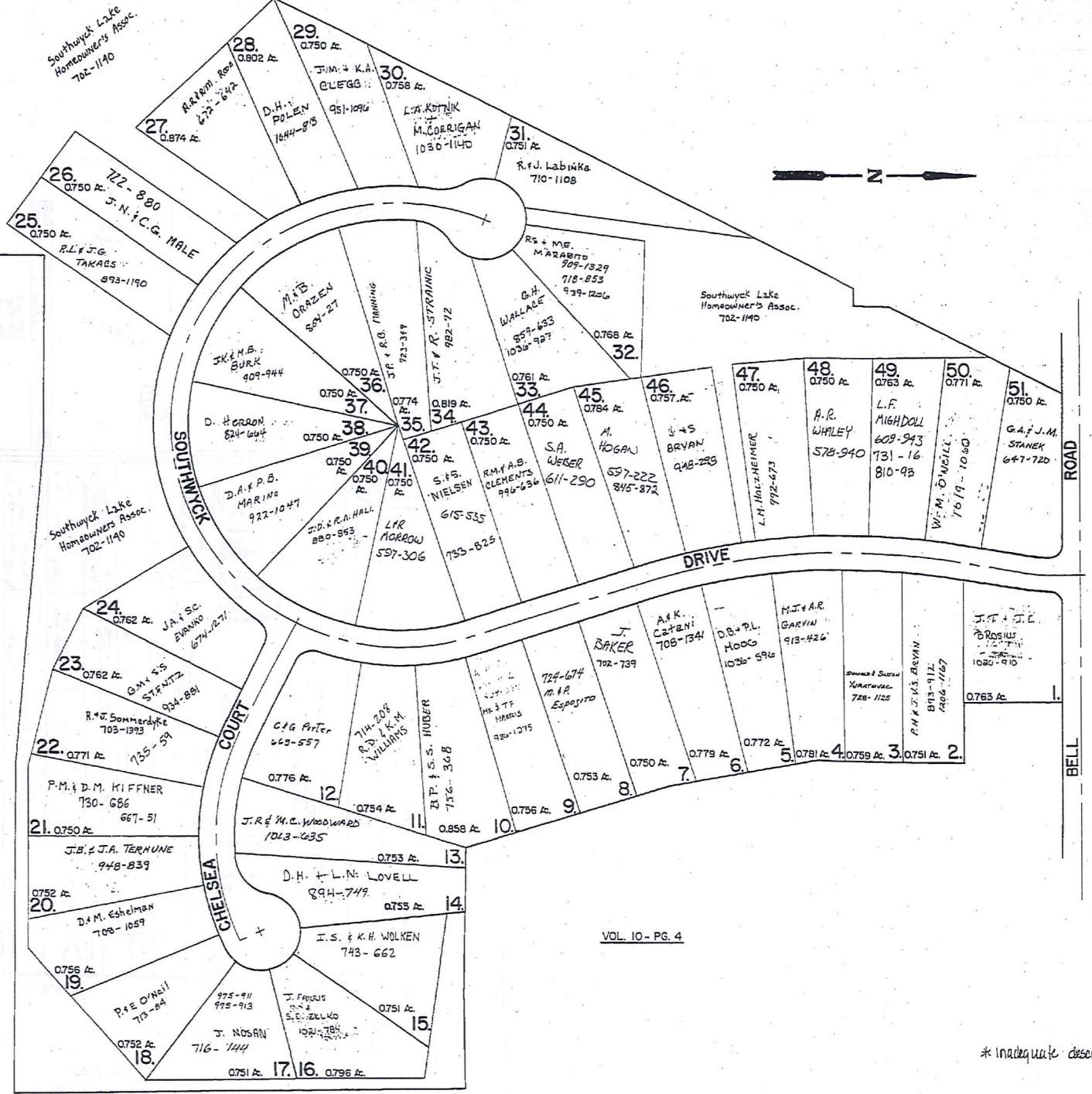


VILLAGE OF SOUTH RUSSELL  
 WASTE WATER TREATMENT  
 PLANT SITE  
 5.440 AC.  
 (0.29 AC BAINBRIDGE TWP.)

BAINBRIDGE TOWNSHIP  
 RUSSELL TOWNSHIP

VOL. 9 - PG. 101

SHEERBROOK ACRES



VOL. 10 - PG. 4

\* inadequate description

**SHEERBROOK ACRES NUMBER 2**

JAN. 1, 1996

RELATIVE REPRESENTATION

14-Q

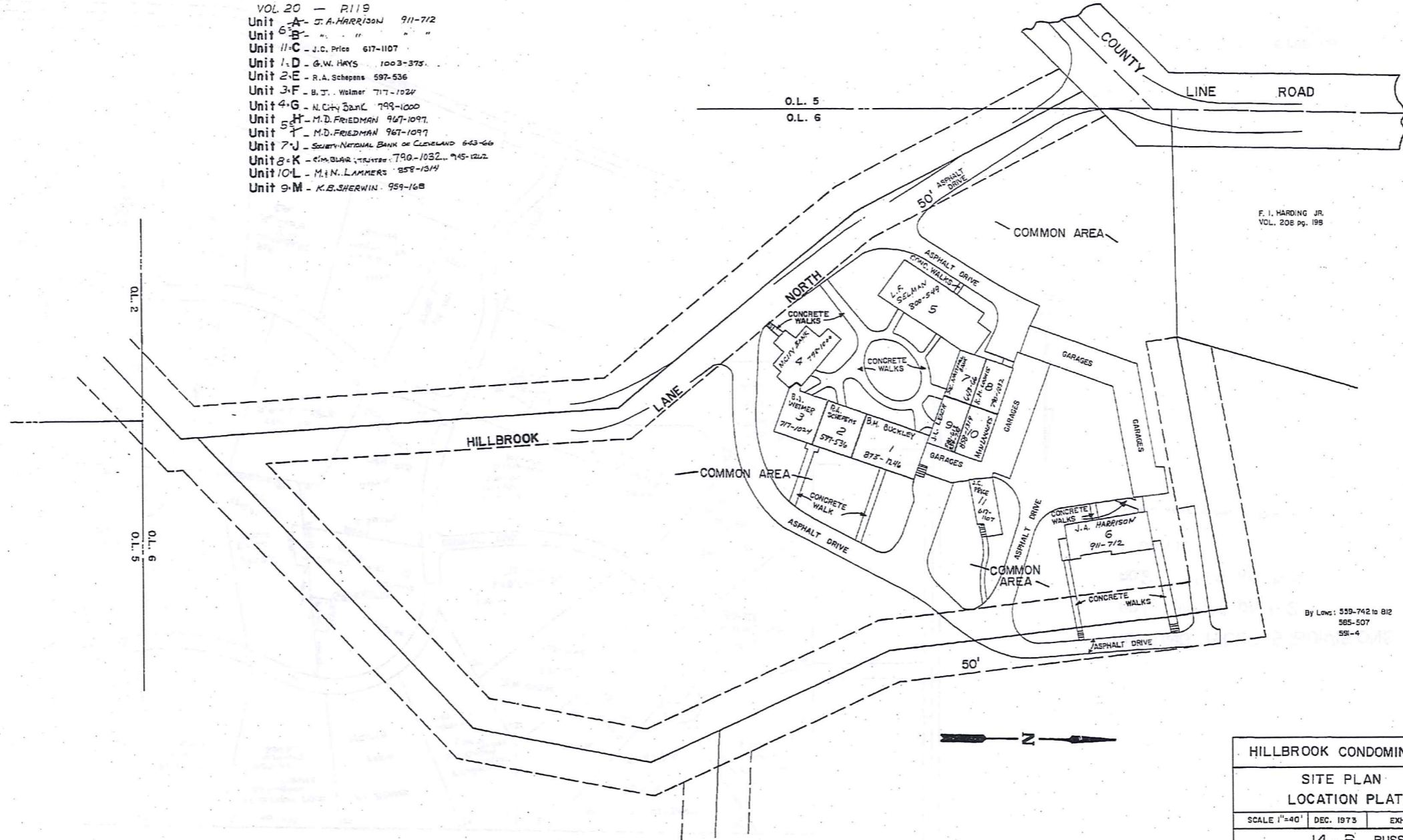
1-800-345-7334



SCALE IN 1/10 OF AN INCH

AMENDED  
HILLBROOK CONDOMINIUM

- VOL 20 - P119  
 Unit A - J.A. HARRISON 911-712  
 Unit B - " " " "  
 Unit C - J.C. PRICE 617-1107  
 Unit D - G.W. HAYS 1003-375  
 Unit E - R.A. SCHAPELS 597-536  
 Unit F - B.T. WELMER 717-1024  
 Unit G - N. CHY BARK 793-1000  
 Unit H - M.D. FRIEDMAN 967-1097  
 Unit I - M.D. FRIEDMAN 967-1097  
 Unit J - SOCIETY NATIONAL BANK OF CLEVELAND 643-66  
 Unit K - SIMBLAR, TRUSTEE 790-1032, 945-1222  
 Unit L - M.N. LAMMERS 858-1314  
 Unit M - K.S. SHERWIN 959-168



HILLBROOK CONDOMINIUM  
 SITE PLAN  
 LOCATION PLAT  
 SCALE 1"=40' DEC. 1973 EXHIBIT B  
 14 - R RUSSELL

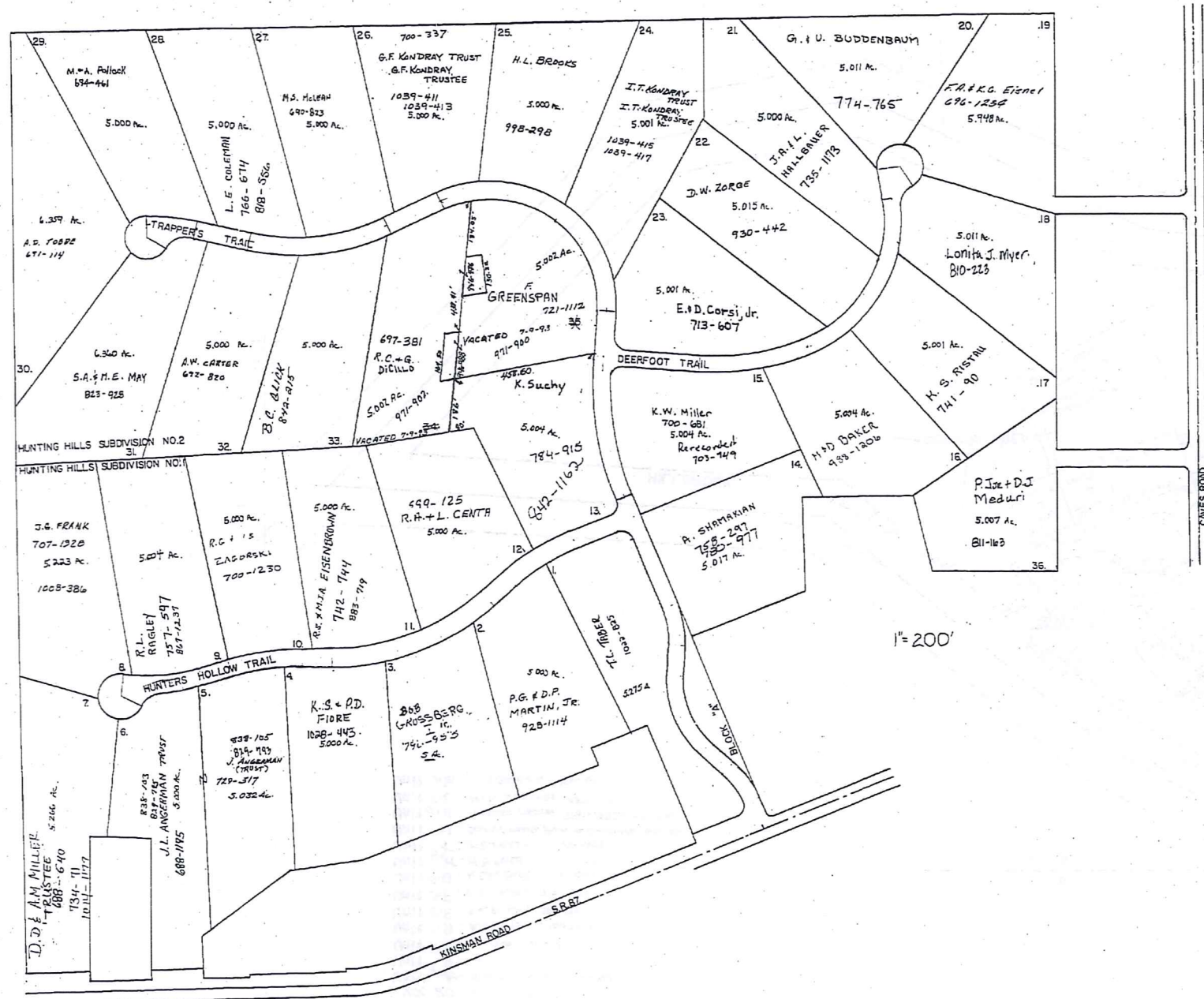
Recorded Vol. 10 pg. 38  
 AMENDED VOL 20 - P119 8-11-92

JAN. 1, 1996

RELATIVE REPRESENTATION  
 \* Inadequate description

TRM-REDI  
 1-800-345-7334  
 SCALE IN 1/100 OF AN INCH

445



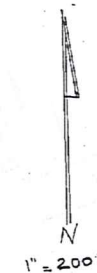
HUNTING HILLS SUBDIVISIONS. 1&2.

no.1 vol. 14 pg. 1-2.

no.2 vol. 14 pg. 17-19.

JAN 1,

HUNTING HILLS PROPERTIES, INC.

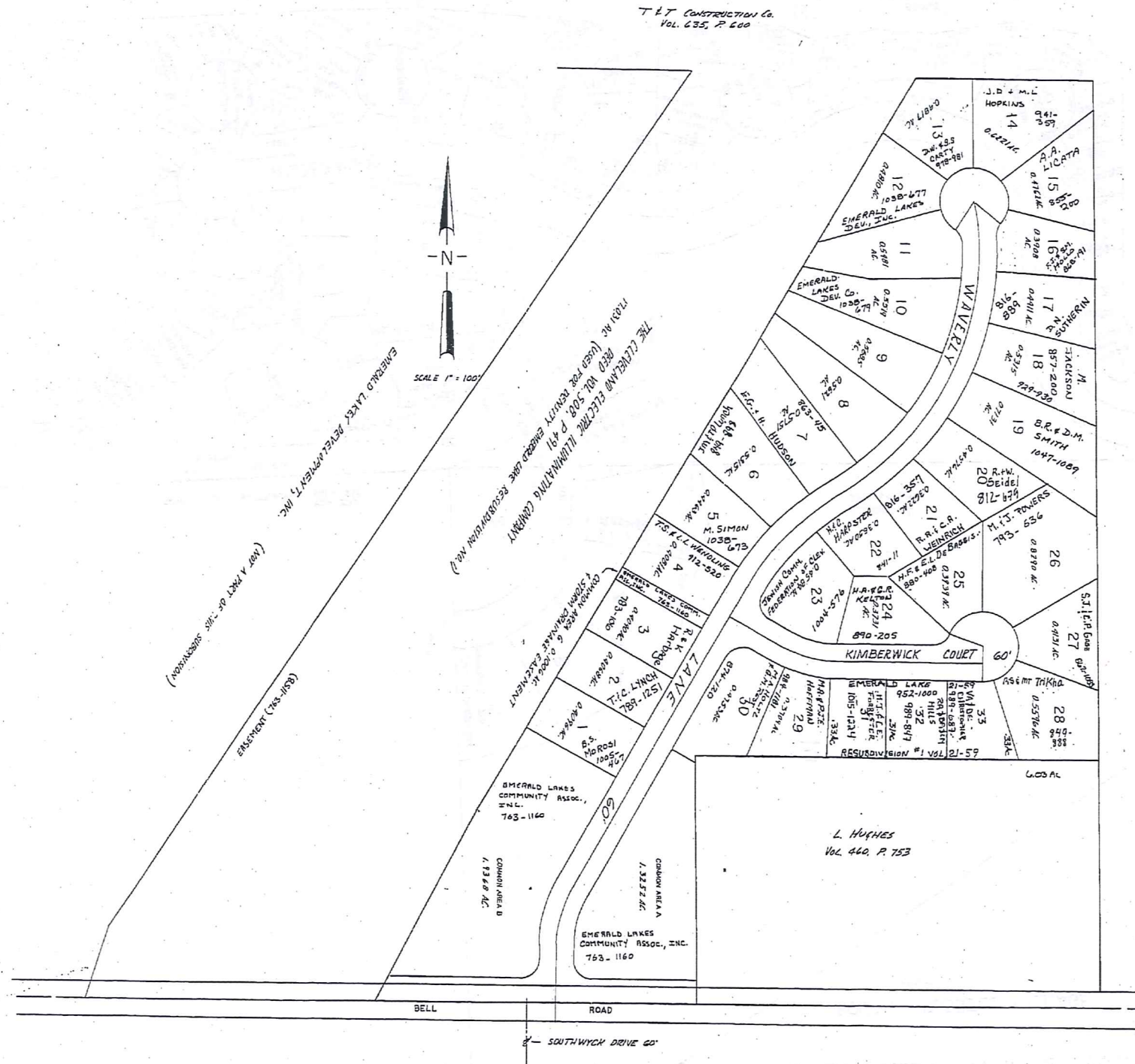


TRIM-REMI  
1-800-345-7334

SCALE IN 1/16" OF AN INCH

\* Inadequate description.

JANUARY 1, 1996  
RELATIVE REPRESENTATION



EMERALD LAKE  
 SUBDIVISION NO. 1  
 VOL. 15 - PG. 107, 108 &  
 RESUBDIVISION NO. 1  
 VOL. 15 - PG. 134, 135

1" = 100'

JANUARY 1, 1996

\* inadequate description

TRW-REDI  
 1-800-345-7334

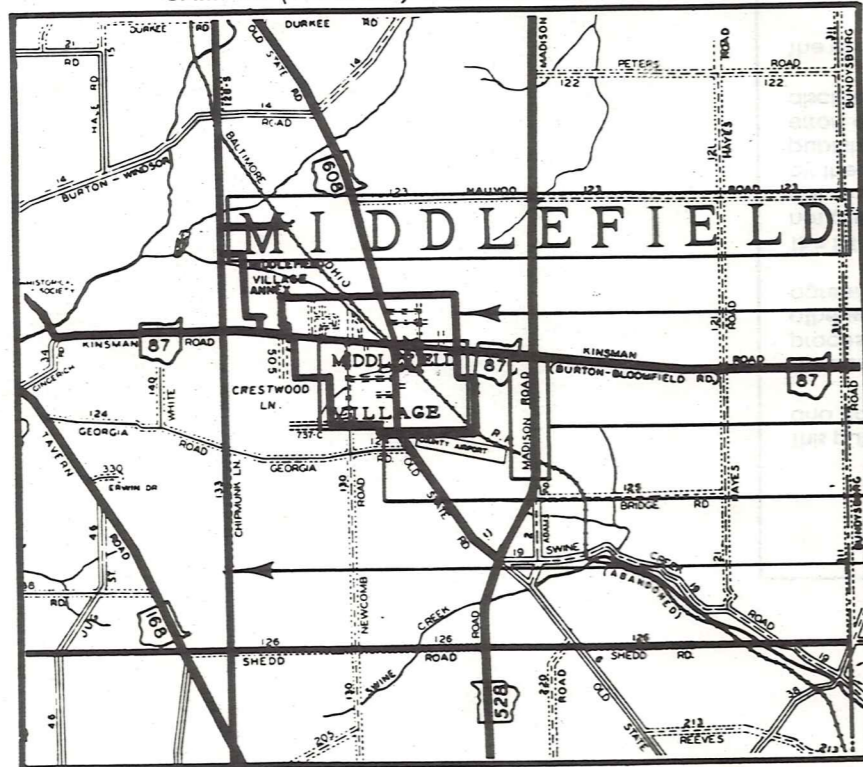
SCALE IN 1/16 OF AN INCH



# Explanation and Use Sheet for Geauga County, Ohio

A

SAMPLE (PARTIAL) COUNTY INDEX MAP



Tract Lot Number

Acreage

Township Name

Village Boundary

Street Name

Village Name

Township Boundary

Owners Name

Denotes Continuous Ownership

Deed Book & Page

Map Page Number

Township Name

Village Name

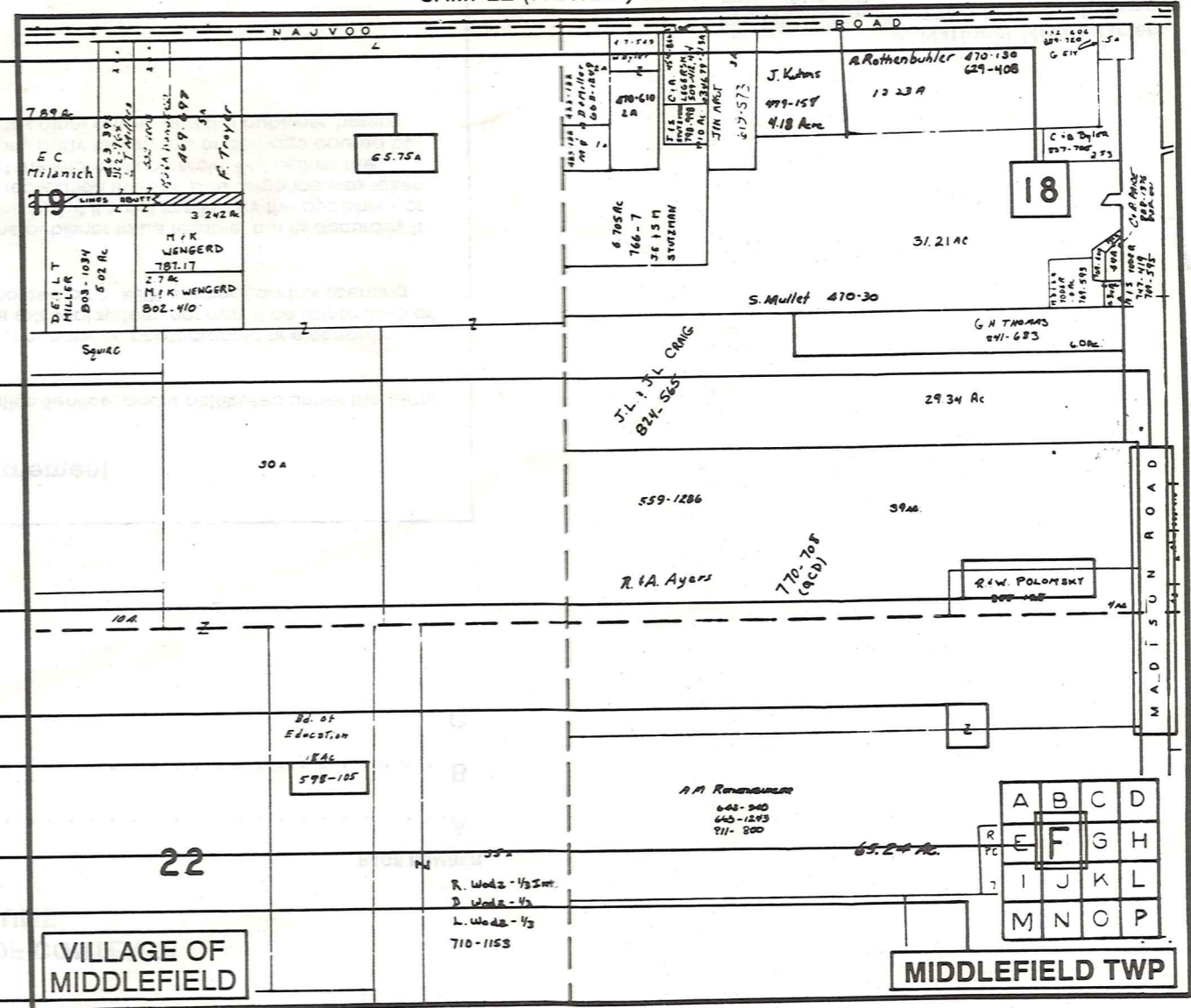
Village Boundary

Street Name

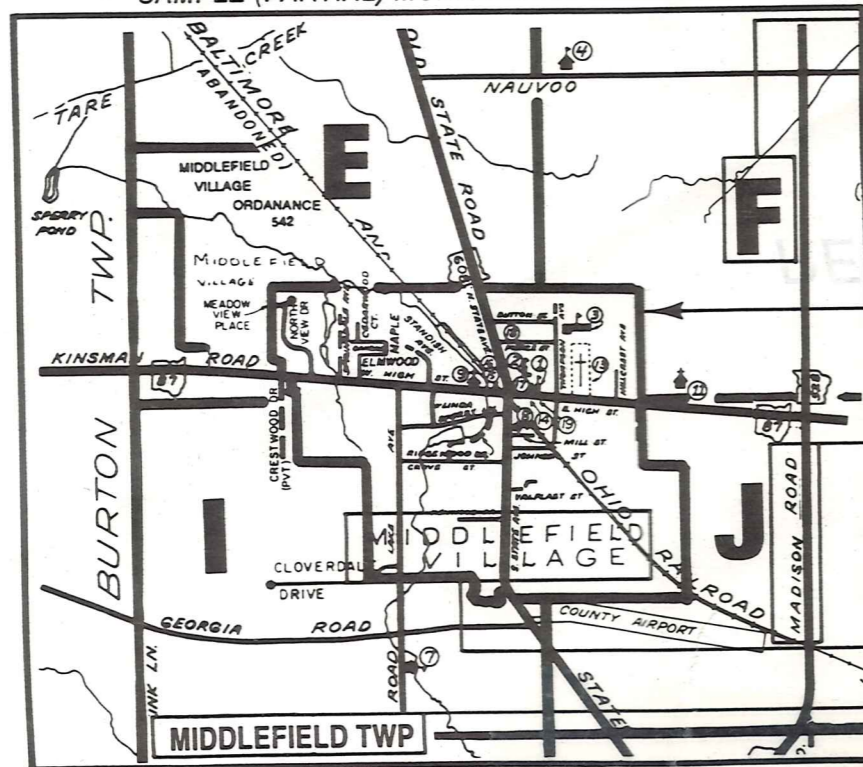
Village Name

Township Name

SAMPLE (PARTIAL) MAP PAGE



SAMPLE (PARTIAL) MUNICIPALITY INDEX MAP



## USE OF THE MAP VOLUME

- LOCATE THE GENERAL AREA OF INTEREST ON THE COUNTY INDEX MAP AND NOTE THE MUNICIPALITY NAME (TOWNSHIP OR VILLAGE).
  - REFER TO THE TABLE OF CONTENTS AND NOTE THE BEGINNING ATLAS PAGE NUMBER FOR THE MUNICIPALITY OF INTEREST.
  - TURN TO THE PAGE INDICATED, ON THIS PAGE WILL APPEAR AN INDEX MAP FOR THAT MUNICIPALITY.
  - LOCATE THE GENERAL AREA OF INTEREST AND NOTE THE MAP PAGE NUMBER. THIS MAY BE EITHER A LETTER OR A NUMBER.
  - MAP PAGES ARE IN ALPHABETICAL (OR NUMERICAL) SEQUENCE FOLLOWING THE MUNICIPALITY INDEX MAP. FOLLOW SEQUENCE TO THE MAP PAGE INDICATED.
  - LOCATE SPECIFIC PARCEL OF INTEREST AND NOTE THE DESIRED INFORMATION.
- NOTE: ON SOME MAPS YOU MAY BE REFERRED TO A DETAIL SHEET SHOWING AN ENLARGEMENT OF THE AREA. THESE MAPS ARE FOUND AT THE END OF THE REGULAR MAP PAGES IN EACH MUNICIPALITY IN EITHER ALPHABETICAL OR NUMERICAL SEQUENCE.
- NOTE: CHARDON VILLAGE HAS TITLE SHEETS. TO LOCATE OWNERS NAME, NOTE THE PARCEL NUMBER, REFER TO THE TITLE PAGE FOLLOWING THE MAP OF INTEREST, FOLLOW NUMERICAL SEQUENCE TO THE PARCEL NUMBER OF INTEREST AND NOTE THE DESIRED INFORMATION. IN ALL OTHER MUNICIPALITIES THE OWNERS NAME APPEARS ON THE MAP PAGE.